

# LOTIS WELLINGTON

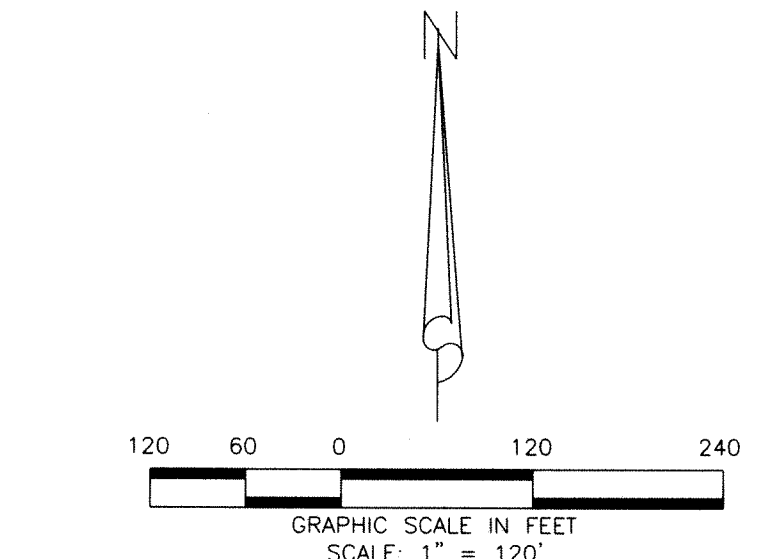
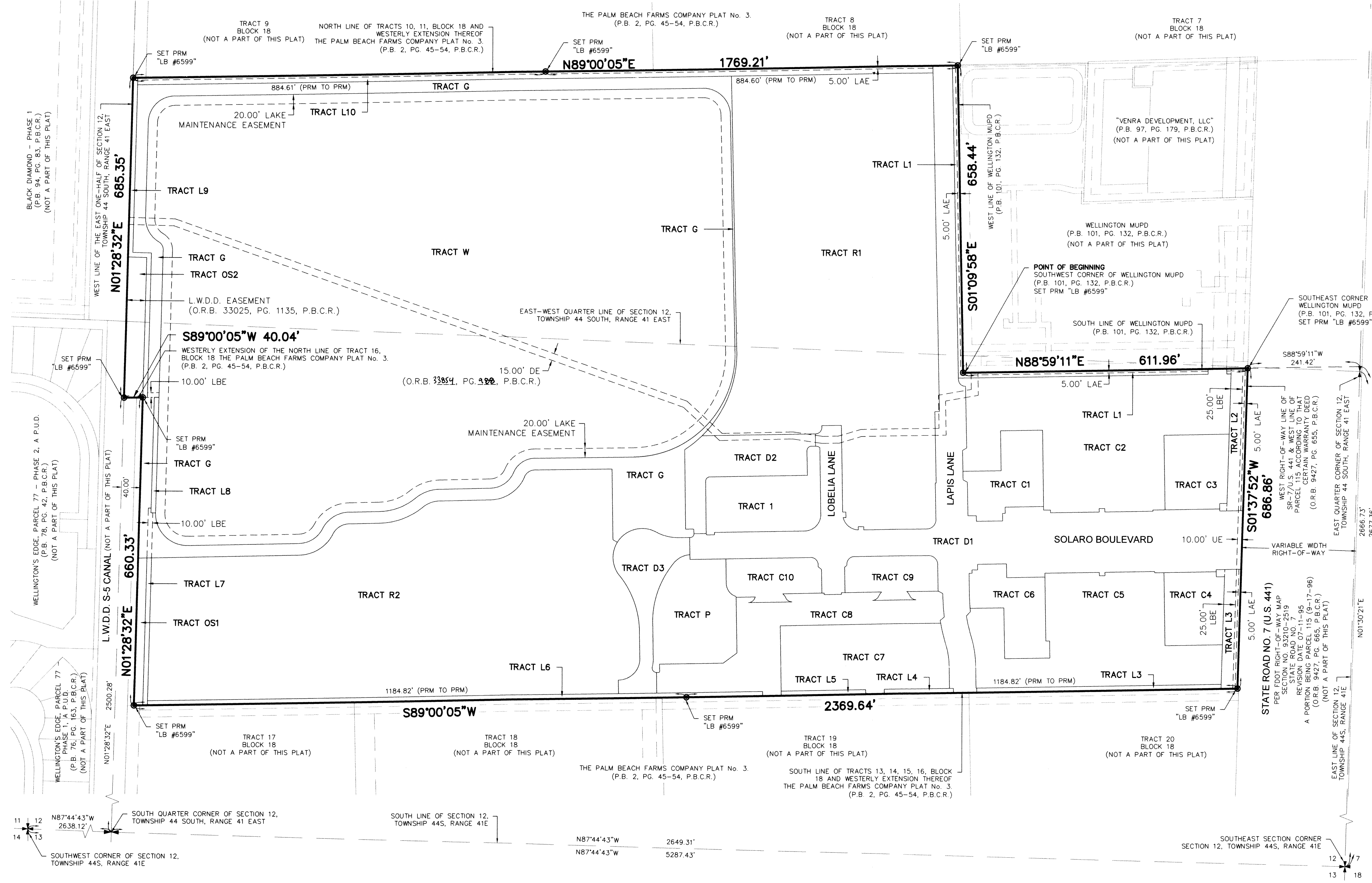
BEING A REPLAT OF TRACT 10, TRACT 11, A PORTION OF TRACTS 13, TRACT 14, TRACT 15, A PORTION OF TRACT 16, BLOCK 18, TOGETHER WITH A PORTION OF THE 25 FOOT WIDE ROAD RESERVATION LYING BETWEEN TRACTS 10, 11, 12, 13, 14, 15 AND 16, BLOCK 18, TOGETHER WITH A PORTION OF THE VARIABLE WIDTH ROAD RESERVATION LYING WEST OF TRACT 10, BLOCK 18, THE PALM BEACH FARMS CO. PLAT NO. 3, ACCORDING TO THE PLAT THEREOF, AS RECORDED IN PLAT BOOK 2, PAGES 45 THROUGH 54, THE PUBLIC RECORDS OF PALM BEACH COUNTY, FLORIDA  
 SECTION 12, TOWNSHIP 44 SOUTH, RANGE 41 EAST  
 VILLAGE OF WELLINGTON, PALM BEACH COUNTY, FLORIDA  
 AUGUST 2022

STATE OF FLORIDA )  
 COUNTY OF PALM BEACH ) S.S.

THIS INSTRUMENT WAS FILED FOR RECORD AT \_\_\_\_\_ M. THIS \_\_\_\_\_ DAY OF \_\_\_\_\_, 20\_\_\_\_ AND DULY RECORDED IN: PLAT BOOK \_\_\_\_\_ ON PAGE \_\_\_\_\_ SHARON R. BOCK CLERK CIRCUIT COURT BY: \_\_\_\_\_ DEPUTY CLERK

133

SHEET 3 OF 11



**LEGEND:**

AL	ARC LENGTH
CA	CENTRAL ANGLE
DE	DRAINAGE EASEMENT
FDOT	FLORIDA DEPARTMENT OF TRANSPORTATION
L.W.D.D.	LAKE WORTH DRAINAGE DISTRICT
LAE	LIMITED ACCESS EASEMENT
LBE	LANDSCAPE BUFFER EASEMENT
O.R.B.	OFFICIAL RECORDS BOOK
P.B.	PLAT BOOK
P.B.C.R.	PALM BEACH COUNTY RECORDS
PG	PAGE
PRM	PERMANENT REFERENCE MONUMENT
R	RADIUS
UE	UTILITY EASEMENT

NOTE: EXCEPT AS EXPLICITLY BOTH DEPICTED AND DEDICATED HEREON, ALL OTHER REQUIRED EASEMENTS WILL BE CREATED AND CONVEYED TO THE APPROPRIATE ENTITIES BY SEPARATE INSTRUMENT/S, AND THE DETERMINATION BY THE GRANTOR NOT TO DEPICT AND/OR DEDICATE ANY SUCH OTHER EASEMENTS ON THIS PLAT SHALL NOT BE INTERPRETED TO CREATE (WHETHER IN FAVOR OF ANY GOVERNMENTAL ENTITY OR AUTHORITY, ANY PUBLIC OR PRIVATE UTILITY, ANY OTHER PRIVATE PARTY, OR THE PUBLIC) ANY FORM OF EASEMENT BY NECESSITY, BY IMPLICATION, OR OTHER FORM OF PRESCRIPTIVE EASEMENT.

THIS INSTRUMENT WAS PREPARED BY: DAVID A. BOWER, P.S.M. #5888 IN THE OFFICES OF DENNIS J. LEAVY AND ASSOCIATES, INC. LB #6599 460 BUSINESS PARK WAY, SUITE B ROYAL PALM BEACH, FLORIDA 33411 (561) 753 - 0650

**DENNIS J. LEAVY & ASSOCIATES, INC.**  
**LAND SURVEYORS AND MAPPERS**  
 460 BUSINESS PARK WAY • SUITE B • ROYAL PALM BEACH, FL • 33411  
 PHONE: (561) 753-0650 EMAIL: SURVEY@DJLASURVEY.NET

SCALE: 1"=120'	CHECKED BY: DB	DATE: 02/16/2022
DRAWN BY: MT	JOB NO.: 18-107-001 PLAT	